

PRAGUE, 7 March 2024

Dozens more barrier-free railway stations joined last year

The number of barrier-free accessible train stations is constantly growing. At the end of last year, 60 per cent of all mainline stations already offered convenient access to platforms, and even 68 per cent of buildings. Správa železnic's new lifting platforms serve passengers in wheelchairs at dozens of locations. The assistance service, which helps people with mobility to get from the station forecourt to the train, is becoming increasingly popular. Last year alone, over 19,000 people used it.

In the area of barrier-free accessibility of stations, other constructions were completed last year that will be appreciated by people with reduced mobility. *"Barriers were literally removed en masse, especially as part of the reconstruction and electrification of the line from Šumperk via Uničov to Olomouc, where we modernised platforms at more than ten stations. Also worth mentioning are the busy stations Praha-Vysočany, Roudnice nad Labem, Roztoky u Prahy and Rožnov pod Radhoštěm. But the list of locations improved in this way is much longer,"* says Jiří Svoboda, Director General of Správa železnic.

Overview of stations with newly barrier-free platforms:

Praha-Vysočany	Praha-Radotín	Roztoky u Prahy
Roudnice nad Labem	Krupka-Bohosudov	Pernolec
Bělá nad Radbuzou zastávka	Velim	Brandýs nad Orlicí
Hrabišín	Nová Hradečná	Libina
Troubelice střed	Troubelice zastávka	Uničov
Uničov zastávka	Újezd u Uničova	Babice u Šternberka
Hlušovice	Mladějovice	Štarnov
Bohuňovice	Adamov	Strážnice
Rožnov pod Radhoštěm		

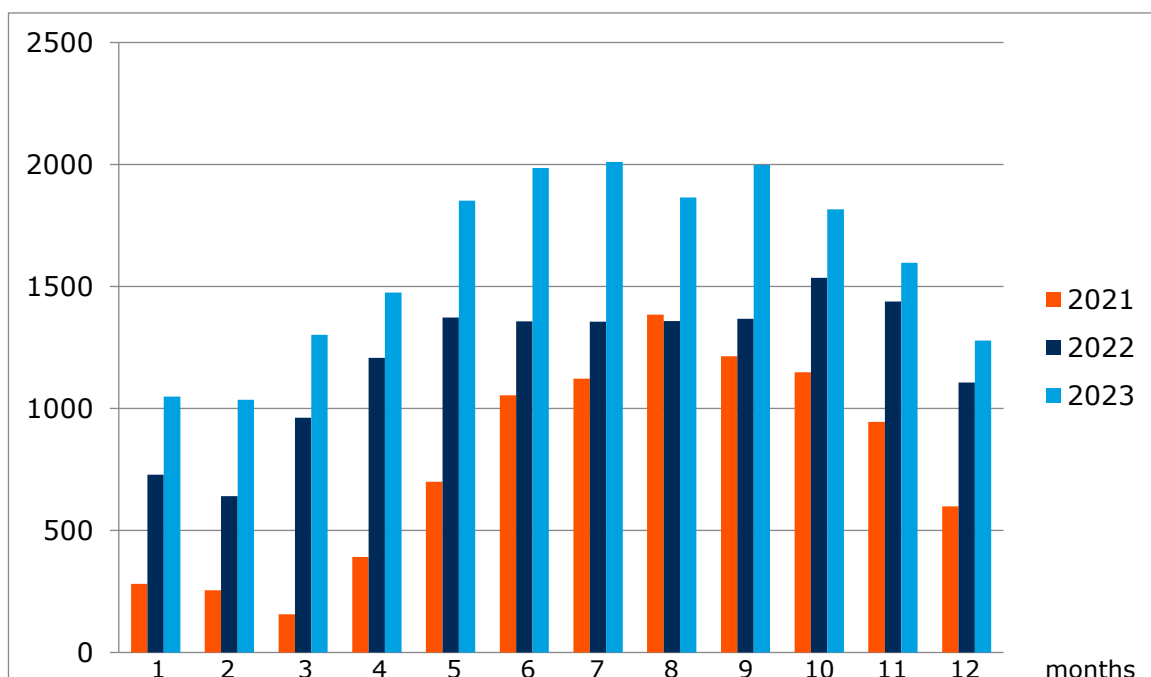
Obstacles in the form of stairs do not have to be overcome thanks to the reconstruction of a considerable number of station buildings. Conditions not only for passengers with disabilities improved last year in Praha-Radotín, Blatno u Jesenice, Horšovský Týn, Pocinovice, Prachatice, Vimperk, Čejetice, Mačkov, Písek, Veselí nad Lužnicí, Kostelec u Jihlavy, Opočno pod Orlickými horami, Nová Paka, Moravský Beroun či Opava západ. The barrier-free accessibility of the brand new buildings in Aš and Chodov is a matter of course.

The proportion of barrier-free stations on Správa železnic's network is steadily increasing thanks to completed constructions. On main lines that are part of the trans-European transport network, this was applied to platforms in a full 60 percent of stations and stops

and to 68 percent of all buildings. Conditions for people with reduced mobility will continue to improve. Thanks to the construction actions started by 2028, the share of barrier-free buildings will increase to 72 percent, and even to 79 percent for platforms.

For several years now, Správa železnic has been offering accompaniment to the train for passengers with reduced mobility and orientation at railway stations. It reached a new maximum in this area last year, providing more than 19,000 assists. This represents a one-third increase compared to the previous period, when over 14,000 people ordered this service.

Assistance provided by Správa železnic - accompaniment



The assistance also includes helping passengers to get on or off the train using new electrically powered lifting platforms. The same type is also used on railways in France, Austria, Poland, and Slovakia.

Správa železnic started offering this service last year at the busiest stations, including the main stations in Prague, Brno, Ostrava, Pilsen, Olomouc or Ústí nad Labem, Prague Masaryk Station, Ostrava-Svinov, České Budějovice and others. By the end of the year, 44 platforms were available to passengers in 22 locations, and the total number of assisted lifts exceeded five and a half thousand.